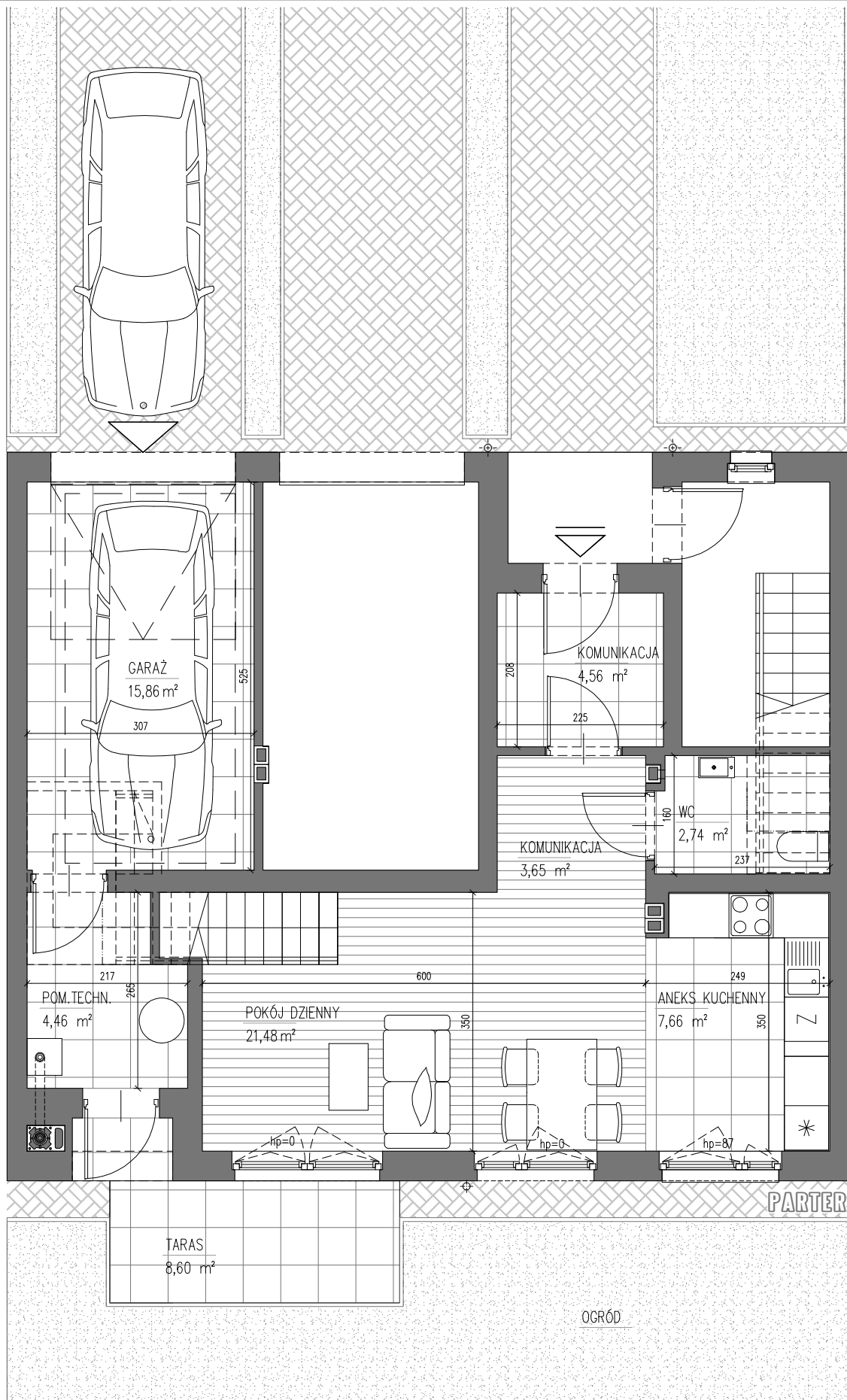
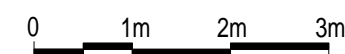
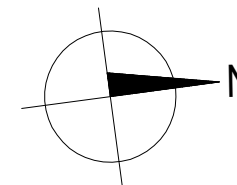
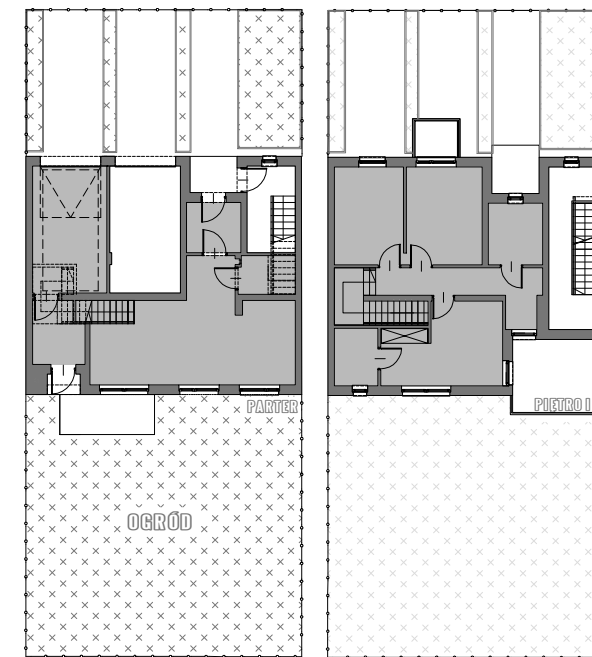
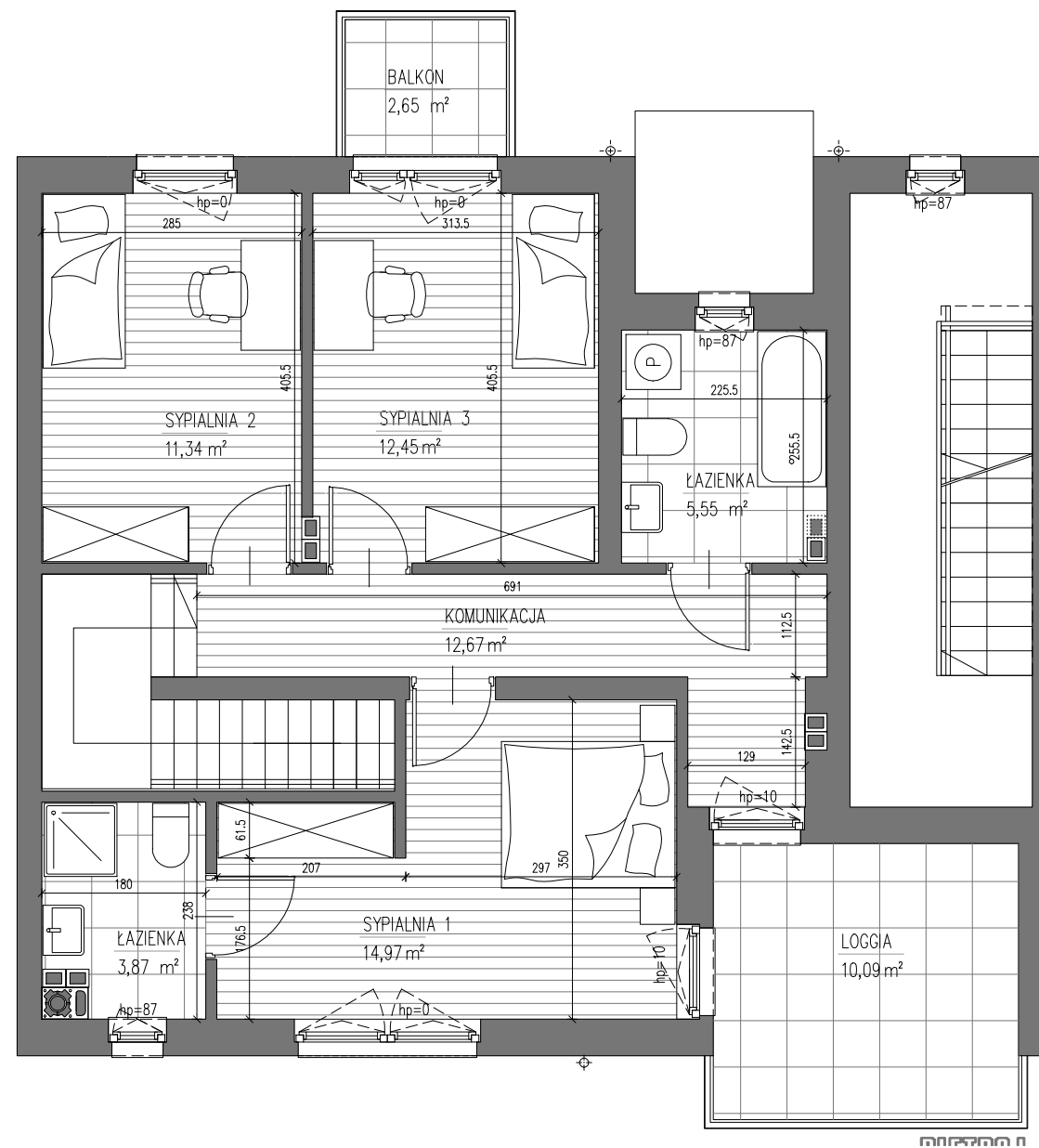


# BUDYNEK A3



MIESZKANIE	96,38m <sup>2</sup>
BALKONY I TARASY	21,34m <sup>2</sup>
GARAŻ	15,86m <sup>2</sup>
KOMUNIKACJA I POM.TECH.	9,02m <sup>2</sup>
OGRÓD	113,0m <sup>2</sup>



GENA LOKALU brutto.....

# MIESZKANIE 5

