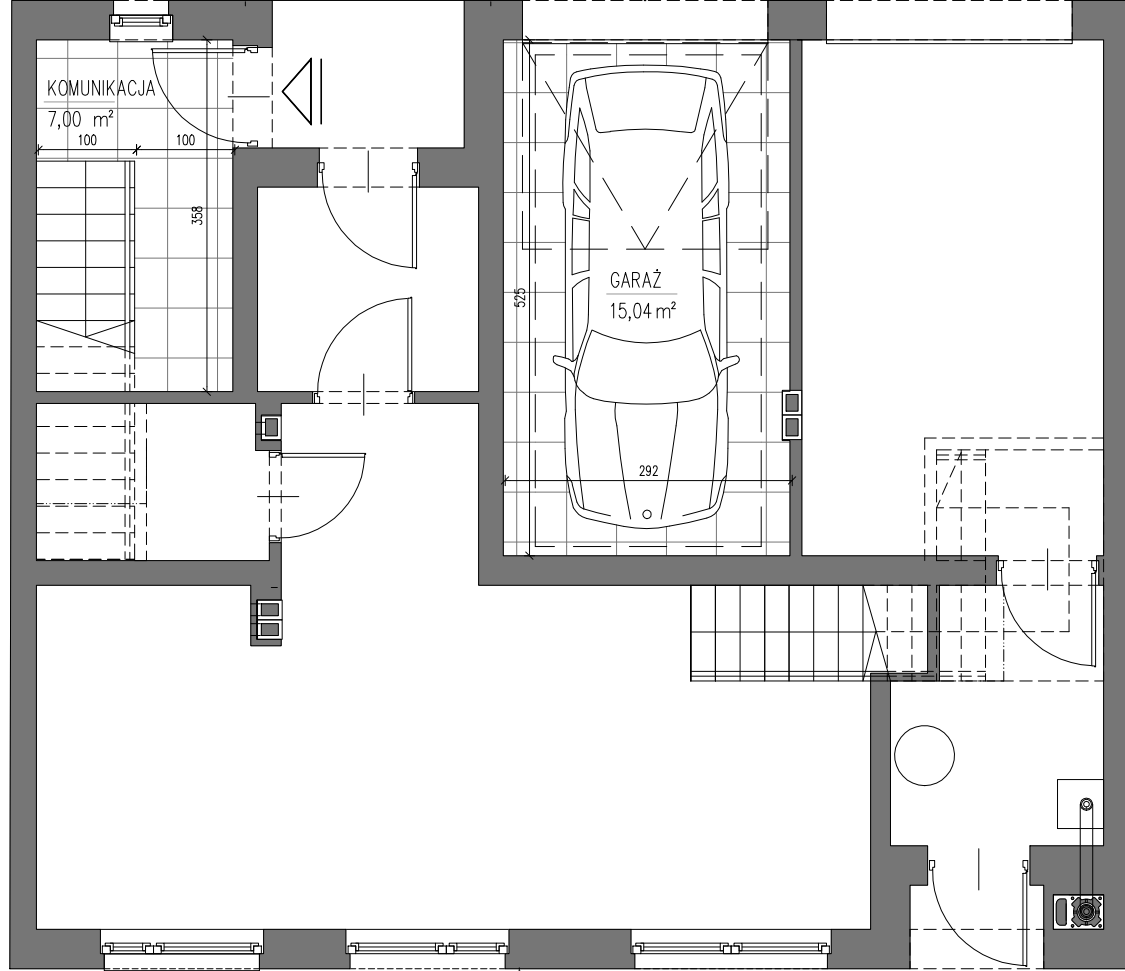
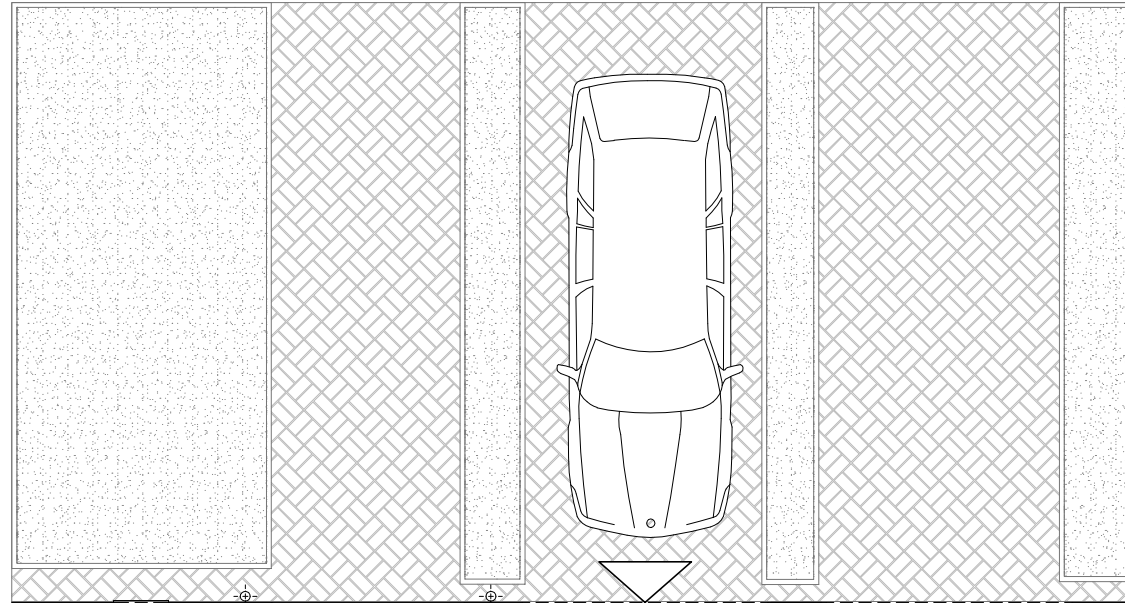
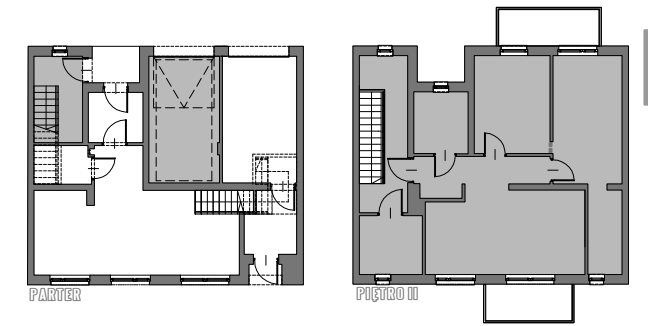


BUDYNEK A2

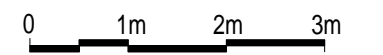
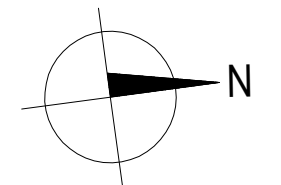


PARTER

- MIESZKANIE** 66.45m²
- BALKONY I TARASY** 11.54m²
- GARAŻ** 15.04m²
- KOMUNIKACJA I POM.TECH.** 36.74m²



PIĘTRO II



GENA LOKALU brutto.....

MIESZKANIE 4

